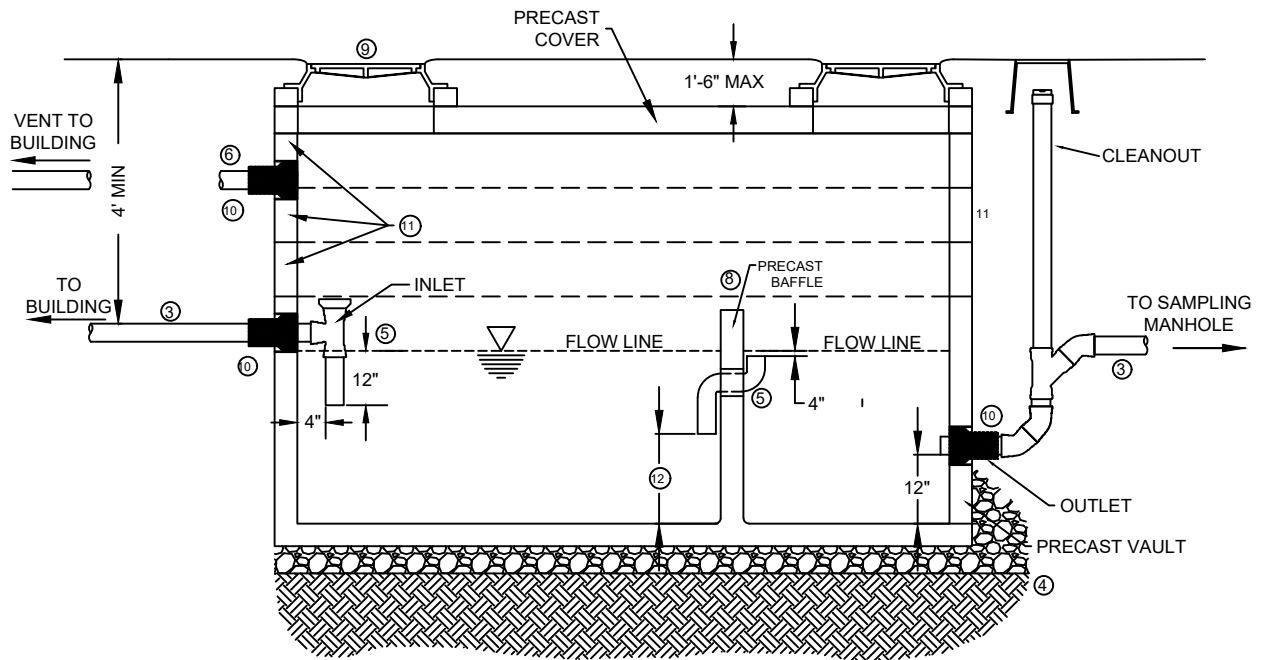


PLAN VIEW



PROFILE VIEW

NOTES:

1. THE GREASE INTERCEPTOR CAPACITY IS DEFINED AS THE STORAGE VOLUME OF THE VAULT BELOW THE OUTLET PIPE ELEVATION.
2. THE GREASE INTERCEPTOR SHALL HAVE A MINIMUM CAPACITY OF 800 GALLONS.
3. THE INLET PIPE SHALL BE BETWEEN ONE AND THREE INCHES HIGHER THAN THE OUTLET PIPE.
4. THE GREASE INTERCEPTOR SHALL BE INSTALLED LEVEL AND ON A COMPACTED FOUNDATION WITH 12" BEDDING MATERIAL AS SPECIFIED IN 407.01.
5. PIPING THROUGH BAFFLE WALL SHALL BE 6" SOLVENT WELD PVC. THE INLET AND OUTLET PIPES SHALL BE GASKETED PVC.
6. GREASE INTERCEPTOR SHALL BE VENTED INDEPENDENTLY THROUGH THE BUILDING, AWAY FROM AIR INTAKES, MIN SIZE 2".
7. SANITARY WASTES SHALL NOT BE PLUMBED TO GREASE INTERCEPTOR.
8. THE DIMENSIONS AND CONFIGURATION OF THE VAULT AND BAFFLE SHALL BE ACCORDING TO THE MANUFACTURER'S REQUIREMENTS FOR THE SIZE OF INTERCEPTOR INSTALLED. THE VOLUME OF THE FIRST CHAMBER SHALL BE DOUBLE THAT OF THE SECOND CHAMBER. THE TOP OF THE BAFFLE WALL SHALL BE AT LEAST 3" ABOVE THE CROWN OF THE INLET PIPE AND SHALL MAINTAIN A 3" GAP FROM THE BOTTOM OF THE COVER.
9. SEE STD DETAIL SS-2A FOR REQUIREMENTS IN THIS AREA.
10. CORED FOR FLEXIBLE RUBBER BOOT PIPE CONNECTOR. FLEXIBLE PIPE CONNECTOR GROUTED AFTER INSTALLATION.
11. VAULT RISER SECTIONS AS REQUIRED (JOINT SEALANT AT ALL JOINTS)
12. HALFWAY BETWEEN FLOOR AND FLOW LINE (DEPTH OF FLOW MIDPOINT)

NO SCALE



JORDAN BASIN
IMPROVEMENT DISTRICT

**GREASE INTERCEPTOR
DETAIL**

DRAWN:	DESIGNED:	CHECKED:	APPROVED:
DATE AUG 2024	FILE NAME	DRAWING NAME PT-1	